

TOWN OF YARROW POINT

KING COUNTY

WASHINGTON

SALLY'S ALLEY PHASE 2



TOWN OFFICIALS

KATY HARRIS

Mayor

STEPHAN LANGERHOLM

STEVE BUSH

Town Council

CHUCK PORTER

MICHAEL HYMAN

Town Council

KATHY SMITH

STACIA SCHROEDER, P.E

TOWN ENGINEER

BONNIE RITTER

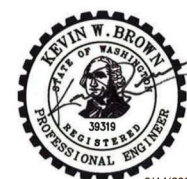
CLERK-TREASURER

APPROVAL FOR CONSTRUCTION
<i>Stacia Schroeder</i>
BY: TOWN OF YARROW POINT
DATE: MARCH 2025
APPROVAL EXPIRES: MARCH 2026



3710 168TH STREET NE, BLDG. B, SUITE 210
ARLINGTON, WASHINGTON 98223 (360) 454-5490
BID SET 3/20/25 Page 1 of 8

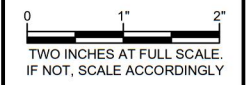
MARCH 2025
G&O JOB #23445.02



No.	DATE	REVISION

ISSUED FOR: BID PLAN SET
 ISSUE DATE: MAR 2025
 APPROVED BY: KWB
 CHECKED BY: CJB
 DRAWN BY: MAN

G & O JOB NO.: 23445.02
 FILE: LEGEND.DWG



CIVIL
**VICINITY & LOCATION
MAPS,
LEGEND,
ABBREVIATIONS AND
INDEX**

ABBREVIATIONS

AC	ASBESTOS CEMENT PIPE
AD	AREA DRAIN
ADJ	ADJUST
ALT	ALTERNATE
ANSI	AMERICAN NATIONAL STANDARDS INSTITUTE
ASPH	ASPHALT
ASTM	AMERICAN SOCIETY OF TESTING AND MATERIALS
AVE	AVENUE
BLOG	BUILDING
BO	BLOW OFF
BOP	BEGINNING OF PROJECT
C	CONDUIT
CB	CATCH BASIN
CF	CUBIC FEET
CFS	CUBIC FEET PER SECOND
CMP	CORRUGATED METAL PIPE
CO	CLEANOUT
CONC	CONCRETE
CONT	CONTINUED/CONTINUOUS
CPEP	CORRUGATED POLYETHYLENE PIPE
CTR	CENTER
CY	CUBIC YARD
ε	CENTER LINE
DI	DUCTILE IRON
DIA	DIAMETER
DIM	DIMENSION
DWGS	DRAWING(S)
E	EAST
EA	EACH
EL	ELEVATION
ELEC	ELECTRICAL
EOP	END OF PROJECT
EX	EXISTING
FIG	FIGURE
FT	FEET
GA	GAUGE
GALV	GALVANIZED
HDPE	HIGH DENSITY POLYETHYLENE PIPE
ID	INSIDE DIAMETER
IE	INVERT ELEVATION
IN	INCH
INV	INVERT
L	LENGTH
LB	POUND
LF	LINEAR FEET
MAX	MAXIMUM
MFR	MANUFACTURER
MH	MANHOLE
MIN	MINIMUM
MISC	MISCELLANEOUS
N	NORTH
NO	NUMBER
NTS	NOT TO SCALE
OC	ON CENTER
OD	OUTSIDE DIAMETER
PERF	PERFORATED
PP	POWER POLE
PVC	POLYVINYL CHLORIDE
PVMT	PAVEMENT
QTY	QUANTITY
R	RADIUS
R/W	RIGHT-OF-WAY
REINF	REINFORCE
RR	RAILROAD
S	SOUTH
SCH	SCHEDULE
SF	SQUARE FEET
SHT	SHEET
SQ	SQUARE
STA	STATION
STD	STANDARD
TC	TOP OF CURB
TEL	TELEPHONE
TESC	TEMPORARY EROSION AND SEDIMENT CONTROL
TYP	TYPICAL
UGC	UNDERGROUND CONVERSION
VERT	VERTICAL
W	WEST
WI	WITH
W/O	WITHOUT
WSDOT	WASHINGTON STATE DEPARTMENT OF TRANSPORTATION

EXISTING LEGEND

SURFACE FEATURES	DESCRIPTION	SYMBOLS	DESCRIPTION	SYMBOLS	DESCRIPTION
	CENTER LINES		WATER VALVE		TRAFFIC SIGNAL POLE
	RIGHT-OF-WAY LINES		HYDRANT		STREET LIGHT
	LOT LINES		FDC		LUMINAIRE(DOUBLE)
	WATER LINE		POST INDICATOR VALVE		LUMINAIRE(SINGLE)
	DITCH LINE		WATER BLOW OFF		PEDESTRIAN LIGHT POLE
	SANITARY SEWER LINE		WATER METER		AREA LIGHT
	STORM DRAIN LINE		IRR. CONTROL VALVE		GAS METER
	GAS LINE		MANHOLES (SS/SD)		GAS VALVE
	UNDERGROUND POWER LINES		CB		SIGN
	UNDERGROUND COMMUNICATION LINES (COMCAST/LUMEN)		POWER TRANSFORMER		MAILBOX
	OVERHEAD UTILITY LINES		POWER/COMM. VAULT		NEWS PAPER BOX
	HIGH WATER LINE		WATER/UTILITY VAULT		TRASH CAN
	CHAIN LINK FENCE		POWER MANHOLE		ROCKERY
	WIRE FENCE		COMM. MANHOLE		SPOT ELEVATION
	WOOD FENCE		WATER MANHOLE		SIZE & TYPE (CONIFEROUS TREE)
	EDGE OF ASPHALT		POWER METER		SIZE & TYPE (DECIDUOUS TREE)
			SURFACE JUNCTION BOX		MAGNETIC NAIL W/ WASHER
			SUBSURFACE JUNCTION BOX		REBAR AND CAP (SET)
			POWER/UTILITY POLE		REBAR AND CAP (FOUND)
			POWER/UTILITY POLE W/DROP		TACK AND LEAD
			ANCHOR POLE		HUB AND TACK
			GUY ANCHOR		CASED MONUMENT
					SURFACE MONUMENT

PROPOSED LEGEND

SURFACE FEATURES	DESCRIPTION	PROPOSED SANITARY/STORM SEWER SYMBOLS	DESCRIPTION
	GRAVEL SURFACING		STORM DRAIN MANHOLE/TYPE 2 CATCH BASIN (ACTUAL DIMENSION SHOWN FOR PROPOSED)
	CENTERLINE OF CONSTRUCTION		STORM DRAIN CATCH BASIN, CONCRETE INLET, OR YARD/AREA DRAIN (ACTUAL DIMENSION SHOWN FOR PROPOSED)
	SAWCUT LINE (APPROXIMATE LOCATION)		
	STORM DRAIN (SIZE AS NOTED)		
	TEMPORARY CONSTRUCTION EASEMENT		
		PROPOSED SURFACE FEATURES/LANDSCAPING	DESCRIPTION
			SIGN
			ROCKERY
			TIMBER EDGING

ORDER OF WORK

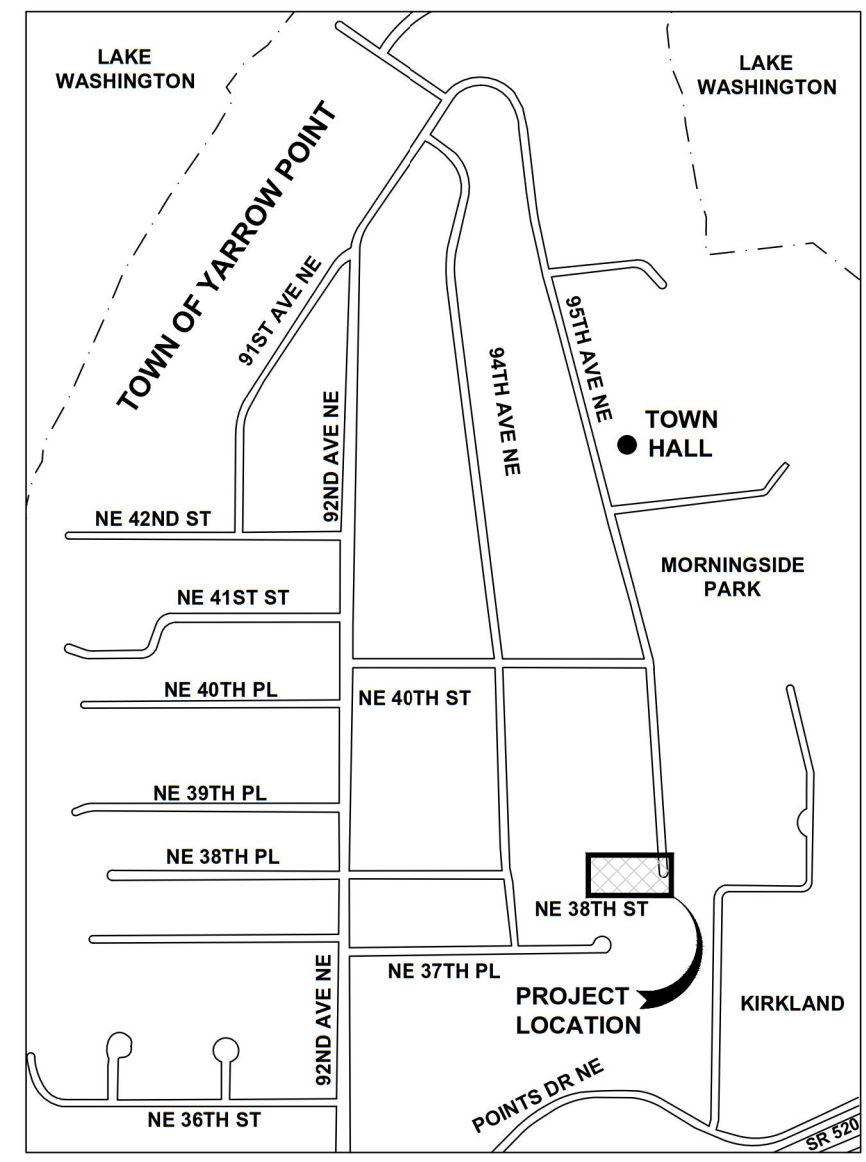
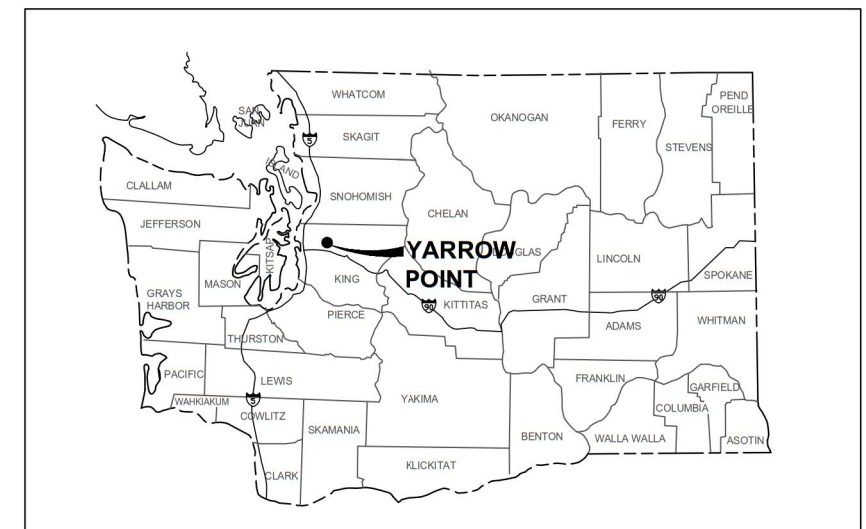
1. ATTEND PRECONSTRUCTION MEETING
2. PROVIDE MATERIAL SUBMITTALS
3. CALL FOR UTILITY LOCATES
4. INSTALL TRAFFIC CONTROL AND EROSION CONTROL DEVICES
5. PERFORM POTHOLING OPERATIONS
6. PROPERTY RESTORATION
7. SUBMIT RECORD DRAWINGS

SHEET INDEX	
Sheet Number	Sheet Description
-	COVER
1	VICINITY & LOCATION MAPS, SYMBOL LEGEND, ABBREVIATIONS AND INDEX
2	SURVEY CONTROL, KEY MAP AND ALIGNMENT TABLES
3	GENERAL CONSTRUCTION NOTES
4	TEMPORARY EROSION CONTROL DETAILS
5	TESC AND DEMO PLAN
6	TRAIL PLAN & PROFILE
7	CONSTRUCTION DETAILS

**BURIED UTILITIES IN AREA
CALL BEFORE YOU DIG
1-800-424-5555**
EXISTING UTILITIES SHOWN ARE FROM THE BEST AVAILABLE INFORMATION AND NO GUARANTEE IS MADE AS TO THE EXACT SIZE, TYPE, LOCATION OR DEPTH

APPROVAL FOR CONSTRUCTION

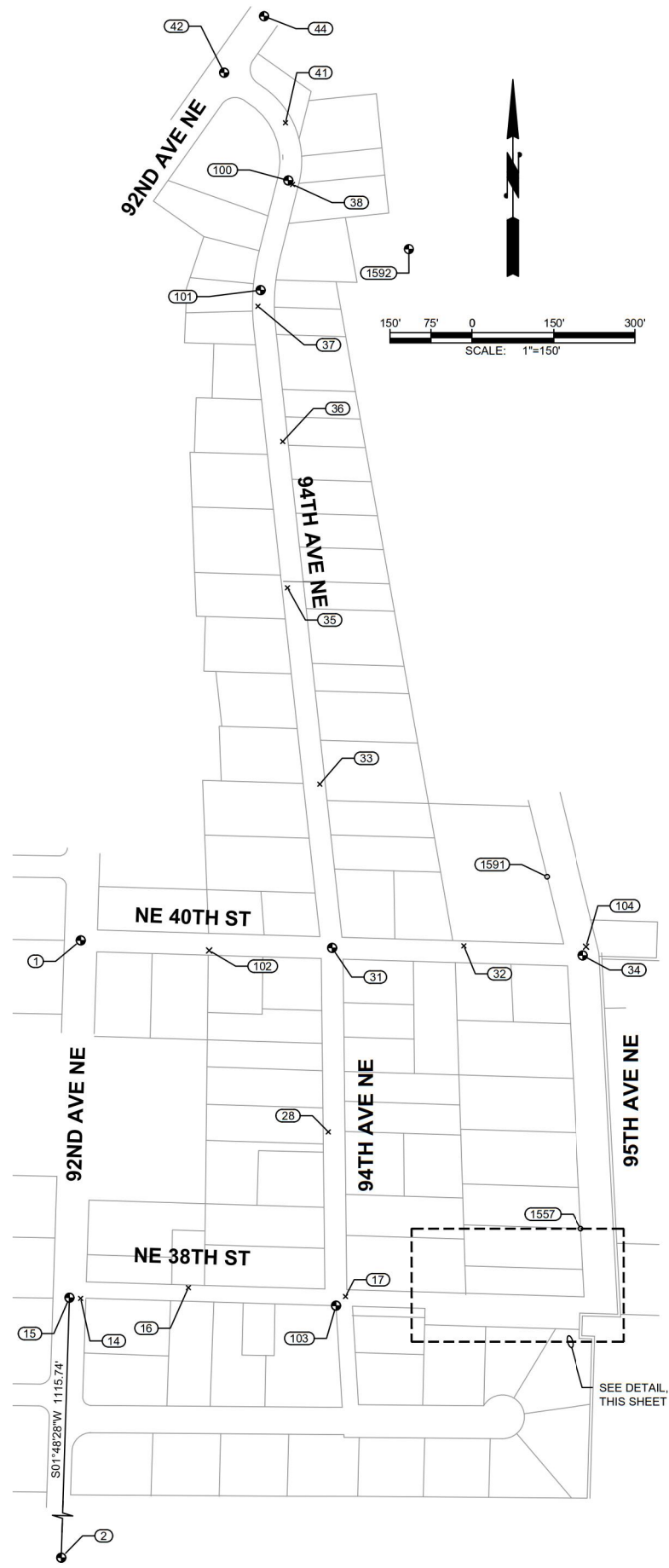
 BY: TOWN OF YARROW POINT
 DATE: JANUARY 2025
 APPROVAL EXPIRES: JANUARY 2026



RIGHT-OF-WAY DISCLAIMER
THE RIGHT-OF-WAY AND/OR PROPERTY LINES SHOWN HEREON ARE BASED ON AVAILABLE INFORMATION, NOT ON A SURVEYED LOCATION AND ARE ONLY APPROXIMATE

m:\yarrow point\23445.00 town wide storm and ugc\03 construction\plan revisions\23445.02 sallys alley phase 2\General\LEGEND.dwg, 3/12/2025 2:36 PM, CHRIS BACON

M:\yarrow_point\23445_00_town_wide_storm_and_ugc\ugc\plan_revisions\23445_02_sallys_alley_phase_2\Civil\SURVEY CONTROL-3.dwg, 3/14/2025 2:40 PM, CHRIS BACON



**TOWN OF YARROW POINT - TOWN WIDE STORM & UGC
JOB NUMBER - 23445**

SURVEY CONTROL & MONUMENTATION			
POINT	NORTHING	EASTING	ELEV.
1	238854.95	1299230.91	116.25
2	237085.48	1299174.97	153.00
14	238199.47	1299230.69	132.74
15	238200.66	1299210.16	131.50
16	238219.12	1299427.99	150.16
17	238203.01	1299715.67	170.60
28	238504.33	1299684.11	161.38
31	238841.22	1299691.07	151.33
32	238844.88	1299932.30	153.66
33	239141.08	1299668.57	140.98
34	238827.48	1300151.30	143.36
35	239500.71	1299609.31	123.70
36	239768.50	1299600.79	110.37
37	240016.20	1299555.43	98.31
38	240239.25	1299618.79	87.70
41	240352.10	1299605.80	82.26
42	240443.91	1299493.42	75.60
44	240547.34	1299566.56	72.79
100	240246.57	1299610.88	86.92
101	240045.70	1299560.14	96.44
102	238836.58	1299465.99	138.32
103	238186.02	1299698.25	170.42
104	238843.44	1300157.61	143.30
105	238170.90	1299954.37	172.63
106	238163.83	1300105.69	167.04
107	238255.47	1300179.40	157.26
1470	238208.87	1299936.09	172.68
1557	238327.18	1300147.34	158.51
1559	238299.61	1300213.90	153.68
1591	238971.52	1300084.77	142.87
1592	240120.75	1299831.55	89.17

SALLY'S ALLEY - CONSTRUCTION CENTERLINE ALIGNMENT

SEGMENT	BEGIN STATION	BEGIN NORTHING	BEGIN EASTING	END STATION	END NORTHING	END EASTING	DISTANCE	BEARING	RADIUS	TANGENT	CURVE LENGTH	DELTA
L1	201+50.09	238,195.96	1,299,860.93	202+03.53	238,179.16	1,299,911.66	53.44	S71°40'22"E				
C1	202+03.53	238,179.16	1,299,911.66	202+10.71	238,177.91	1,299,918.70			25.00	3.61	7.18	16°27'09"
L2	202+10.71	238,177.91	1,299,918.70	202+20.93	238,177.57	1,299,928.92	10.22	S88°07'31"E				
C2	202+20.93	238,177.57	1,299,928.92	202+28.05	238,176.83	1,299,936.00			50.00	3.57	7.12	8°09'51"
L3	202+28.05	238,176.83	1,299,936.00	202+78.95	238,167.96	1,299,986.12	50.90	S79°57'40"E				
C3	202+78.95	238,167.96	1,299,986.12	203+49.44	238,172.13	1,300,055.84			150.00	35.91	70.49	26°55'30"
L4	203+49.44	238,172.13	1,300,055.84	203+70.93	238,178.37	1,300,076.40	21.48	N73°06'50"E				
C4	203+70.93	238,178.37	1,300,076.40	204+17.34	238,166.03	1,300,118.47			40.00	26.21	46.41	66°28'38"
L5	204+17.34	238,166.03	1,300,118.47	204+30.13	238,156.29	1,300,126.76	12.79	S40°24'32"E				
C5	204+30.13	238,156.29	1,300,126.76	204+50.82	238,160.02	1,300,143.18			9.50	18.17	20.69	124°47'25"
L6	204+50.82	238,160.02	1,300,143.18	204+56.00	238,165.04	1,300,144.51	5.19	N14°48'04"E				
C6	204+56.00	238,165.04	1,300,144.51	204+90.07	238,190.65	1,300,165.39			40.00	18.14	34.07	48°47'48"
C7	204+90.07	238,190.65	1,300,165.39	205+23.37	238,217.52	1,300,182.05			30.00	18.60	33.30	63°35'52"
L7	205+23.37	238,217.52	1,300,182.05	205+40.72	238,234.86	1,300,182.05	17.35	N0°00'00"E				
C8	205+40.72	238,234.86	1,300,182.05	205+54.72	238,247.75	1,300,186.76			20.00	7.30	14.00	40°07'05"
C9	205+54.72	238,247.75	1,300,186.76	205+69.77	238,261.68	1,300,191.44			20.00	7.90	15.05	43°06'27"
L8	205+69.77	238,261.68	1,300,191.44	206+00.00	238,291.87	1,300,189.86	30.23	N2°59'23"W				

DISCLAIMER:
SOME TOPOGRAPHIC DATA SHOWN HEREON WAS PERFORMED BY PACE (SEE NOTES, THIS SHEET). ADDITIONAL SURVEY WAS PERFORMED BY GRAY AND OSBORNE ON MAY 16, 2023 UTILIZING PACE CONTROL.

HORIZONTAL DATUM
HORIZONTAL DATUM: NAD 83/11, WASHINGTON COORDINATE SYSTEM NORTH ZONE. BASED ON TIES TO CITY OF BELLEVUE SURVEY CONTROL POINTS 34 & 362 (POINTS 1 & 2 IN THIS PLAN SET)

SURVEY NOTES
ALL DISTANCES SHOWN ARE GROUND DISTANCES UNLESS OTHERWISE NOTED.
THE LOCATION AND DESCRIPTION OF ALL SURVEY MARKERS SHOWN HEREON ARE BASED ON FIELD OBSERVATIONS TAKEN BY PACE ENGINEERS IN JANUARY, 2021, UNLESS OTHERWISE INDICATED.

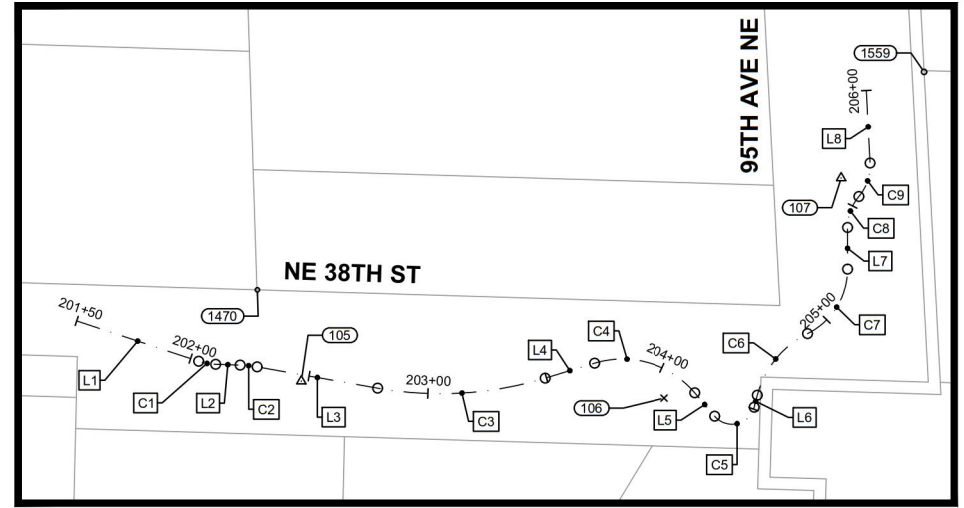
WORK PERFORMED IN CONJUNCTION WITH THIS SURVEY UTILIZED THE FOLLOWING EQUIPMENT AND PROCEDURES: (A) 1" TRIMBLE S7 SERIES ELECTRONIC TOTAL STATION, MAINTAINED TO THE MANUFACTURER'S SPECIFICATIONS PER W.A.C. 332-130-100. (B) FIELD TRAVERSE, EXCEEDING REQUIREMENTS SET FORTH IN W.A.C. 332-130-090. (C) LEASE SQUARE ADJUSTMENT USING StarNet VERSION 9.0 EXCEEDING REQUIREMENTS PER W.A.C. 332-130-080.

VERTICAL DATUM
VERTICAL DATUM: NAVD 88 BASED ON TIES TO CITY OF BELLEVUE SURVEY CONTROL POINTS 34 & 362 (POINTS 1 & 2 IN THIS PLAN SET)

RIGHT OF WAY MARGINS AND CENTERLINES SHOWN HEREON AREA BASED UPON THE FOUND CENTERLINE MONUMENTS. PARCELOT LINES SHOWN HEREON ARE PER KING COUNTY GIS AND SHOULD BE ASSUMED APPROXIMATE

THIS SURVEY WAS PERFORMED WITHOUT THE BENEFIT OF A TITLE REPORT AND DOES NOT PURPORT TO SHOW ALL EASEMENTS.

THIS TOPOGRAPHIC SURVEY DRAWING ACCURATELY PRESENTS SURFACE FEATURES LOCATED DURING THE COURSE OF THIS SURVEY. UNDERGROUND UTILITIES SHOWN HEREON ARE BASED SOLELY UPON INFORMATION PROVIDED BY OTHERS AND PACE ENGINEERS, INC. DOES NOT ACCEPT RESPONSIBILITY OR ASSUME LIABILITY FOR THEIR ACCURACY OR COMPLETENESS. CONTRACTOR/ENGINEERS SHALL VERIFY EXACT SIZE AND LOCATION PRIOR TO CONSTRUCTION. CALL FOR LOCATE: UTILITY LOCATION SERVICE: 811



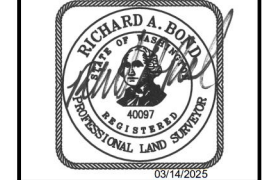
SALLY'S ALLEY CONSTRUCTION CENTERLINE DETAIL

SCALE: 1" = 40'

RIGHT-OF-WAY DISCLAIMER
THE RIGHT-OF-WAY AND/OR PROPERTY LINES SHOWN HEREON ARE BASED ON AVAILABLE INFORMATION, NOT ON A SURVEYED LOCATION AND ARE ONLY APPROXIMATE

APPROVAL FOR CONSTRUCTION
BY: *Steve Schneider*
TOWN OF YARROW POINT
DATE: MARCH 2025
APPROVAL EXPIRES: MARCH 2026

Gray & Osborne, Inc.
CONSULTING ENGINEERS
3710 168TH STREET NORTHEAST,
BUILDING B, SUITE 210
ARLINGTON, WA 98223
(360) 454-5490



TOWN OF YARROW POINT

SALLY'S ALLEY PHASE 2

No.	DATE	REVISION
ISSUED FOR: BID PLAN SET		
ISSUE DATE: MAR 2025		
APPROVED BY: KWB		
CHECKED BY: CJB		
DRAWN BY: MAN		
G & O JOB NO.: 23445.02		
FILE: SURVEY CONTROL-3.DWG		

0 1" 2"
TWO INCHES AT FULL SCALE.
IF NOT, SCALE ACCORDINGLY

CIVIL

SURVEY CONTROL, KEY MAP AND ALIGNMENT TABLES

DRAWING: **2** OF: **7**

**GENERAL NOTES
TOWN OF YARROW POINT**

- THIS DEVELOPMENT PROJECT SHALL CONFORM TO THE TOWN OF YARROW POINT'S REQUIREMENTS AND BE IN ACCORDANCE WITH THE APPROVED PLANS. ANY CHANGES FROM THE APPROVED PLAN WILL REQUIRE APPROVAL FROM THE OWNER, ENGINEER, BUILDING OFFICIAL, TOWN ENGINEER, AND TOWN PLANNER AS APPLICABLE.
- ALL WORKMANSHIP AND MATERIALS SHALL CONFORM TO THE "WASHINGTON STATE DEPARTMENT OF TRANSPORTATION (WSDOT) STANDARD SPECIFICATIONS FOR ROAD, BRIDGE, AND MUNICIPAL CONSTRUCTION" (LATEST EDITION), EXCEPT WHERE SUPPLEMENTED OR MODIFIED BY THE TOWN. COPIES OF THE ABOVE DOCUMENTS SHALL BE AVAILABLE AT THE JOB SITE DURING CONSTRUCTION.
- A PRE-CONSTRUCTION MEETING IS REQUIRED PRIOR TO THE START OF ALL CONSTRUCTION. CONTACT THE TOWN ENGINEER OR THE TOWN BUILDING OFFICIAL TO SCHEDULE A MEETING.
- LOCATIONS SHOWN FOR EXISTING UTILITIES ARE APPROXIMATE. THE CONTRACTOR IS CAUTIONED THAT OVERHEAD UTILITY LINES MAY NOT BE SHOWN ON THE DRAWINGS. IT SHALL BE THE CONTRACTOR'S RESPONSIBILITY TO DETERMINE THE TRUE ELEVATIONS AND LOCATIONS OF ALL UNDERGROUND UTILITIES AND THE EXTENT OF ANY HAZARDS CREATED BY OVERHEAD UTILITY LINES. IDENTIFICATION, LOCATION MARKING, AND RESPONSIBILITY FOR UNDERGROUND FACILITIES OR UTILITIES IS GOVERNED BY PROVISION OF CHAPTER 19.122 REVISED CODE OF WASHINGTON (RCW). PRIOR TO STARTING CONSTRUCTION, THE CONTRACTOR SHALL CALL ONECALL (1-800-424-5555) FOR UTILITY LOCATIONS (WATER, SANITARY SEWER, STORM SEWER, GAS, POWER, TELEPHONE, CABLE TELEVISION, AND INTERNET).
- AS-BUILT DRAWINGS ARE REQUIRED PRIOR TO PROJECT ACCEPTANCE.
- THE CONTRACTOR SHALL HAVE A COPY OF THESE PLANS AND THE CONTRACT SPECIFICATIONS ON THE JOB SITE WHENEVER CONSTRUCTION IS IN PROGRESS.
- PER TOWN OF YARROW POINT MUNICIPAL CODE SECTION 10.12, CONTRACTOR'S VEHICLES, INCLUDING TRUCK AND TRAILER COMBINATIONS, SHALL NOT HAVE AN OVERALL LENGTH IN EXCESS OF 40 FEET.
- ALL COSTS ASSOCIATED WITH RECORD DRAWINGS AND SPCC PLAN SHALL BE INCLUDED IN THE MOBILIZATION, CLEANUP, AND DEMOBILIZATION BID ITEM.

**STORM DRAINAGE NOTES
TOWN OF YARROW POINT
(MODIFIED; NOT ALL NOTES ARE SHOWN)**

- BEFORE ANY CONSTRUCTION MAY OCCUR, THE CONTRACTOR SHALL HAVE PLANS WHICH HAVE BEEN SIGNED AND APPROVED BY THE TOWN OF YARROW POINT, OBTAINED ALL TOWN, COUNTY, STATE, FEDERAL, AND OTHER REQUIRED PERMITS, AND HAVE POSTED ALL REQUIRED BONDS. ~~CONTRACTOR SHALL SUBMIT ALL PERMITS AND BONDS TO THE TOWN ENGINEER FOR REVIEW AND APPROVAL PRIOR TO CONSTRUCTION.~~
- ANY DEVIATION FROM THE APPROVED PLANS WILL REQUIRE WRITTEN APPROVAL. ALL CHANGES SHALL BE SUBMITTED TO THE TOWN.
- ALL DISTURBED AREAS SHALL BE SEEDED AND MULCHED OR SIMILARLY STABILIZED TO THE SATISFACTION OF THE TOWN OF YARROW POINT FOR THE PREVENTION OF ON-SITE EROSION AFTER THE COMPLETION OF CONSTRUCTION.
- ALL CATCH BASINS SHALL BE TYPE I UNLESS OTHERWISE NOTED. CATCH BASINS WITH A DEPTH OF OVER FIVE FEET (5') TO THE PIPE INVERT SHALL BE A TYPE II CATCH BASIN. TYPE II CATCH BASINS EXCEEDING FIVE FEET (5') IN DEPTH SHALL HAVE A STANDARD LADDER INSTALLED.
- CONSTRUCTION OF DEWATERING (GROUNDWATER) SYSTEMS SHALL BE IN ACCORDANCE WITH THE APWA STANDARD SPECIFICATIONS.
- ALL TRENCH BACKFILL SHALL BE COMPACTED TO 95 PERCENT DENSITY IN ROADWAYS, ROADWAY SHOULDERS, ROADWAY PRISM AND DRIVEWAYS, AND 85 PERCENT DENSITY IN UNPAVED AREAS. ALL PIPE ZONE COMPACTION SHALL BE 95 PERCENT.
- THE CONTRACTOR SHALL BE RESPONSIBLE FOR PROVIDING ADEQUATE SAFEGUARDS, SAFETY DEVICES, PROTECTIVE EQUIPMENT, CONFINED SPACE PROTECTION, FLAGGERS, AND ANY OTHER NEEDED ACTIONS TO PROTECT THE LIFE, HEALTH, AND SAFETY OF THE PUBLIC, AND TO PROTECT PROPERTY IN CONNECTION WITH THE PERFORMANCE OF WORK COVERED BY THE CONTRACT. ANY WORK WITHIN THE TRAVELED RIGHT-OF-WAY THAT MAY INTERRUPT NORMAL TRAFFIC FLOW SHALL REQUIRE A TRAFFIC CONTROL PLAN APPROVED BY THE TOWN OF YARROW POINT. ALL SECTIONS OF THE WSDOT STANDARD SPECIFICATIONS, TRAFFIC CONTROL SECTION, AND THE MANUAL OF UNIFORM TRAFFIC CONTROL DEVICES (MUTCD) SHALL APPLY.
- APPROXIMATE LOCATIONS OF EXISTING UTILITIES HAVE BEEN OBTAINED FROM AVAILABLE RECORDS AND ARE SHOWN FOR CONVENIENCE. THE CONTRACTOR SHALL BE RESPONSIBLE FOR VERIFICATION OF EXISTING UTILITY LOCATIONS WHETHER OR NOT THESE UTILITIES ARE SHOWN ON THE PLANS. THE CONTRACTOR SHALL EXERCISE ALL CARE TO AVOID DAMAGE TO ANY UTILITY. IF CONFLICTS WITH EXISTING UTILITIES ARISE DURING CONSTRUCTION, THE CONTRACTOR SHALL NOTIFY THE TOWN ENGINEER OR THE TOWN BUILDING OFFICIAL IMMEDIATELY AND ANY CHANGES REQUIRED SHALL BE APPROVED BY THE APPROPRIATE TOWN STAFF PRIOR TO COMMENCEMENT OF RELATED CONSTRUCTION ON THE PROJECT.
- ALL INLET, MANHOLE, AND CATCH BASIN FRAMES AND GRATES SHALL NOT BE ADJUSTED TO GRADE UNTIL IMMEDIATELY PRIOR TO FINAL PAVING. ALL CATCH BASIN GRATES SHALL BE SET 0.10' BELOW PAVEMENT LEVEL.
- GROUT ALL SEAMS AND OPENINGS IN ALL INLETS, CATCH BASINS, AND MANHOLES.

**TEMPORARY EROSION/SEDIMENTATION NOTES
TOWN OF YARROW POINT
(MODIFIED; NOT ALL NOTES ARE SHOWN)**

- THE APPROVED CONSTRUCTION SEQUENCE SHALL BE AS FOLLOWS:
 - CONDUCT PRE-CONSTRUCTION MEETING.
 - FLAG OR FENCE CLEARING LIMITS.
 - ~~PROTECT WITH NAME AND PHONE NUMBER OF TESC SUPERVISOR.~~
 - INSTALL CATCH BASIN PROTECTION IF REQUIRED.
 - ~~GRATE AND INSTALL CONSTRUCTION ENTRANCE(S).~~
 - INSTALL PERIMETER PROTECTION (SILT FENCE, BRUSH BARRIER, ETC.), IF REQUIRED.
 - ~~CONSTRUCT SEDIMENT POND(S) AND TRAP.~~
 - ~~GRADING AND STABILIZATION CONSTRUCTION ROAD.~~
 - ~~CONSTRUCT CURBAGE WATER CONTROL INTERCEPT DITCHES, PIPE SLOPE DRAINAGE, ETC., SIMULTANEOUSLY WITH CLEARING AND GRADING FOR PROJECT DEVELOPMENT.~~
 - MAINTAIN EROSION CONTROL MEASURES IN ACCORDANCE WITH TOWN OF YARROW POINT STANDARDS AND MANUFACTURER'S RECOMMENDATIONS.
 - RELOCATE EROSION CONTROL MEASURES OR INSTALL NEW MEASURES SO THAT AS SITE CONDITIONS CHANGE, THE EROSION AND SEDIMENT CONTROL IS ALWAYS IN ACCORDANCE WITH THE TOWN TESC MINIMUM REQUIREMENTS.
 - COVER ALL AREAS WITHIN THE SPECIFIED TIME FRAME WITH STRAW, WOOD FIBER MULCH, COMPOST, PLASTIC SHEETING, CRUSHED ROCK OR EQUIVALENT.
 - ~~STABILIZE ALL AREAS THAT REACH FINAL GRADE WITHIN 7 DAYS.~~
 - ~~SEED OR SOIL ANY AREAS TO REMAIN UNGRADED FOR MORE THAN 30 DAYS.~~
 - UPON COMPLETION OF THE PROJECT, ALL DISTURBED AREAS MUST BE STABILIZED AND BEST MANAGEMENT PRACTICES REMOVED IF APPROPRIATE.
- THE IMPLEMENTATION OF THIS ESC PLAN AND THE CONSTRUCTION, MAINTENANCE, REPLACEMENT, AND UPGRADING OF THESE ESC FACILITIES IS THE RESPONSIBILITY OF THE ~~PERMITTEE~~ CONTRACTOR UNTIL ALL CONSTRUCTION IS APPROVED.
- THE ESC FACILITIES SHOWN ON THIS PLAN MUST BE CONSTRUCTED PRIOR TO OR IN CONJUNCTION WITH ALL CLEARING AND GRADING ACTIVITIES IN SUCH A MANNER AS TO ENSURE THAT SEDIMENT-LADEN WATER DOES NOT ENTER THE DRAINAGE SYSTEM OR VIOLATE APPLICABLE WATER STANDARDS. WHEREVER POSSIBLE, MAINTAIN NATURAL VEGETATION FOR SILT CONTROL.
- THE ESC FACILITIES SHOWN ON THIS PLAN ARE THE MINIMUM REQUIREMENTS FOR ANTICIPATED SITE CONDITIONS. DURING THE CONSTRUCTION PERIOD, THESE ESC FACILITIES SHALL BE UPGRADED (E.G. ADDITIONAL SUMPS, RELOCATION OF DITCHES AND SILT FENCES, ETC.) AS NEEDED FOR UNEXPECTED STORM EVENTS. ADDITIONALLY, MORE ESC FACILITIES MAY BE REQUIRED TO ENSURE COMPLETE SILTATION CONTROL. THEREFORE, DURING THE COURSE OF CONSTRUCTION IT SHALL BE THE OBLIGATION AND RESPONSIBILITY OF THE CONTRACTOR TO ADDRESS ANY NEW CONDITIONS THAT MAY BE CREATED BY HIS ACTIVITIES AND TO PROVIDE ADDITIONAL FACILITIES OVER AND ABOVE THE MINIMUM REQUIREMENTS AS MAY BE NEEDED.
- THE ESC FACILITIES SHALL BE INSPECTED BY THE PERMITTEE/CONTRACTOR DAILY DURING NON-RAINFALL PERIODS, EVERY HOUR (DAYLIGHT) DURING RAINFALL EVENTS, AT THE END OF EVERY RAINFALL, AND MAINTAINED AS NECESSARY TO ENSURE THEIR CONTINUED FUNCTIONING. IN ADDITION, TEMPORARY SILTATION PONDS AND ALL TEMPORARY SILTATION CONTROLS SHALL BE MAINTAINED IN A SATISFACTORY CONDITION UNTIL SUCH TIME THAT CLEARING AND/OR CONSTRUCTION IS COMPLETED, PERMANENT DRAINAGE FACILITIES ARE OPERATIONAL, AND THE POTENTIAL FOR EROSION HAS PASSED. WRITTEN RECORDS SHALL BE KEPT DOCUMENTING THE REVIEWS OF THE ESC FACILITIES.
- ALL DENUDED SOILS MUST BE STABILIZED WITH AN APPROVED TESC METHOD (E.G. SEEDING, MULCHING, PLASTIC COVERING, CRUSHED ROCK) WITHIN THE FOLLOWING TIMELINES:
 - MAY 1 TO SEPTEMBER 30 - SOILS MUST BE STABILIZED WITHIN 7 DAYS OF GRADING.
 - OCTOBER 1 TO APRIL 30 - SOILS MUST BE STABILIZED WITHIN 2 DAYS OF GRADING
 - STABILIZE SOILS AT THE END OF THE WORKDAY PRIOR TO A WEEKEND, HOLIDAY, OR PREDICTED RAIN EVENT.
- AT NO TIME SHALL MORE THAN 1' OF SEDIMENT BE ALLOWED TO ACCUMULATE WITHIN A CATCH BASIN. ALL CATCH BASINS AND CONVEYANCE LINES SHALL BE CLEANED PRIOR TO PAVING. THE CLEANING OPERATION SHALL NOT FLUSH SEDIMENT-LADEN WATER INTO THE DOWNSTREAM SYSTEM.
- THE ESC FACILITIES SHALL BE CONSTRUCTED IN ACCORDANCE WITH THE DETAILS ON THE APPROVED PLANS. LOCATIONS MAY BE MOVED TO SUIT FIELD CONDITIONS, SUBJECT TO APPROVAL BY THE TOWN ENGINEER OR THE TOWN BUILDING OFFICIAL.
- OFF-SITE STREETS MUST BE KEPT CLEAN AT ALL TIMES. IF DIRT IS DEPOSITED ON THE PUBLIC STREET SYSTEM THE STREET SHALL BE IMMEDIATELY CLEANED WITH POWER SWEEPER OR OTHER EQUIPMENT.
- ANY CATCH BASINS COLLECTING RUNOFF FROM THE SITE, WHETHER THEY ARE ON OR OFF THE SITE, SHALL HAVE THEIR GRATES COVERED WITH FILTER FABRIC DURING CONSTRUCTION. CATCH BASINS DIRECTLY DOWNSTREAM OF THE CONSTRUCTION ENTRANCE OR ANY OTHER CATCH BASIN AS DETERMINED BY THE TOWN ENGINEER OR TOWN BUILDING OFFICIAL SHALL BE PROTECTED WITH A "FILTER FABRIC SOCK" OR EQUIVALENT.
- ALL PROPERTIES ADJACENT TO THE PROJECT SITE SHALL BE PROTECTED FROM SEDIMENT DEPOSITION AND RUNOFF.
- DO NOT FLUSH CONCRETE BY-PRODUCTS OR TRUCKS NEAR OR INTO THE STORM DRAINAGE SYSTEM. IF EXPOSED AGGREGATE IS FLUSHED INTO THE STORM SYSTEM, IT COULD MEAN RE-CLEANING THE ENTIRE DOWNSTREAM STORM SYSTEM, OR POSSIBLY RE-LAYING THE STORM LINE.
- PRIOR TO OCTOBER 1 OF EACH YEAR (THE BEGINNING OF THE WET SEASON), ALL DISTURBED AREAS SHALL BE REVIEWED TO IDENTIFY WHICH ONES CAN BE SEEDED IN PREPARATION FOR THE WINTER RAINS. THE IDENTIFIED DISTURBED AREA SHALL BE SEEDED WITHIN ONE WEEK AFTER OCTOBER 1. A SITE PLAN DEPICTING THE AREAS TO BE SEEDED AND THE AREAS TO REMAIN UNCOVERED SHALL BE SUBMITTED TO THE TOWN ENGINEER. THE TOWN ENGINEER CAN REQUIRE SEEDING OF ADDITIONAL AREAS IN ORDER TO PROTECT SURFACE WATERS, ADJACENT PROPERTIES, OR DRAINAGE FACILITIES.
- A WATER TRUCK SHALL BE ON SITE AT ALL TIMES TO PROVIDE DUST CONTROL. THIS WORK SHALL BE INCIDENTAL TO CONSTRUCTION, SEE SECTION 2-07.

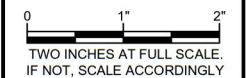
m:\yarrow\point\23445\00\town wide storm and ugc\03\construction\plan revisions\23445.02_sallys alley phase 2\General\GEN NOTES.dwg, 3/12/2025 2:37 PM, CHRIS BACON



TOWN OF YARROW POINT
SALLY'S ALLEY PHASE 2

No.	DATE	REVISION

ISSUED FOR: **BID PLAN SET**
 ISSUE DATE: **MAR 2025**
 APPROVED BY: **KWB**
 CHECKED BY: **CJB**
 DRAWN BY: **MAN**
 G & O JOB NO.: **23445.02**
 FILE: **GEN NOTES.DWG**



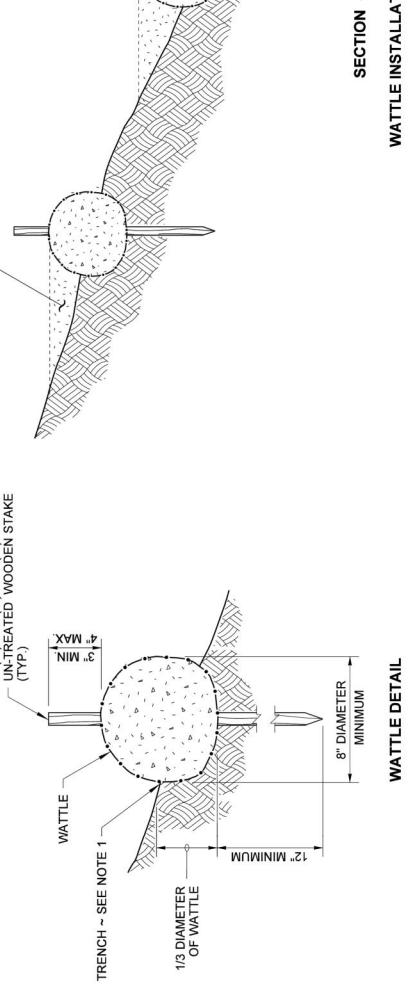
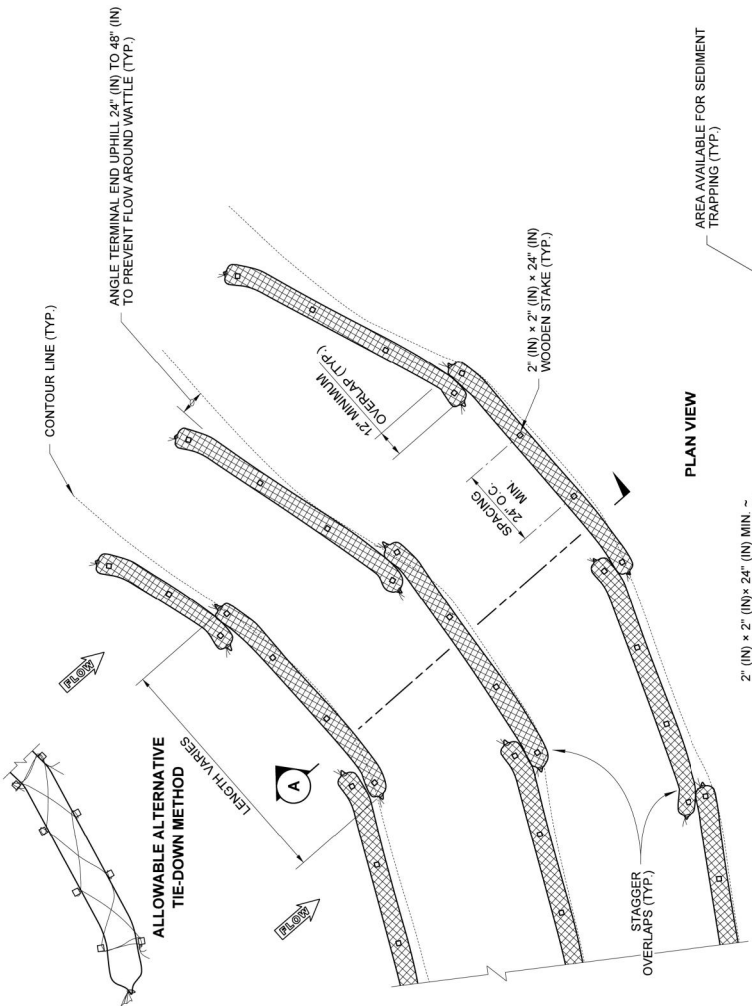
BURIED UTILITIES IN AREA CALL BEFORE YOU DIG
1-800-424-5555
 EXISTING UTILITIES SHOWN ARE FROM THE BEST AVAILABLE INFORMATION AND NO GUARANTEE IS MADE AS TO THE EXACT SIZE, TYPE, LOCATION OR DEPTH

RIGHT-OF-WAY DISCLAIMER
 THE RIGHT-OF-WAY AND/OR PROPERTY LINES SHOWN HEREON ARE BASED ON AVAILABLE INFORMATION, NOT ON A SURVEYED LOCATION AND ARE ONLY APPROXIMATE

APPROVAL FOR CONSTRUCTION
 BY: Chris Bacon
 TOWN OF YARROW POINT
 DATE: **MARCH 2025**
 APPROVAL EXPIRES: **MARCH 2026**

GENERAL CONSTRUCTION NOTES

DRAWING: **3** OF: **7**



WATTLE SPACING TABLE		
TEMPORARY	PERMANENT	
	8" - 10" OR 10" - 12" DIAM.	10" - 12" DIAM.
SLOPE	MAX. SPACING	MAX. SPACING
1H : 1V	5' - 0"	-
2H : 1V	10' - 0"	5' - 0"
3H : 1V	15' - 0"	10' - 0"
4H : 1V	20' - 0"	15' - 0"

STATE OF WASHINGTON ARCHITECT JULIE DEE HARTWIG NO. 1422 EXP. 08/21/2024 LANDSCAPE ARCHITECT

Mark, Steve
Jun 4 2019 8:05 AM
copy

WATTLE INSTALLATION ON SLOPE

STANDARD PLAN I-30.30-02

SHEET 1 OF 1 SHEET

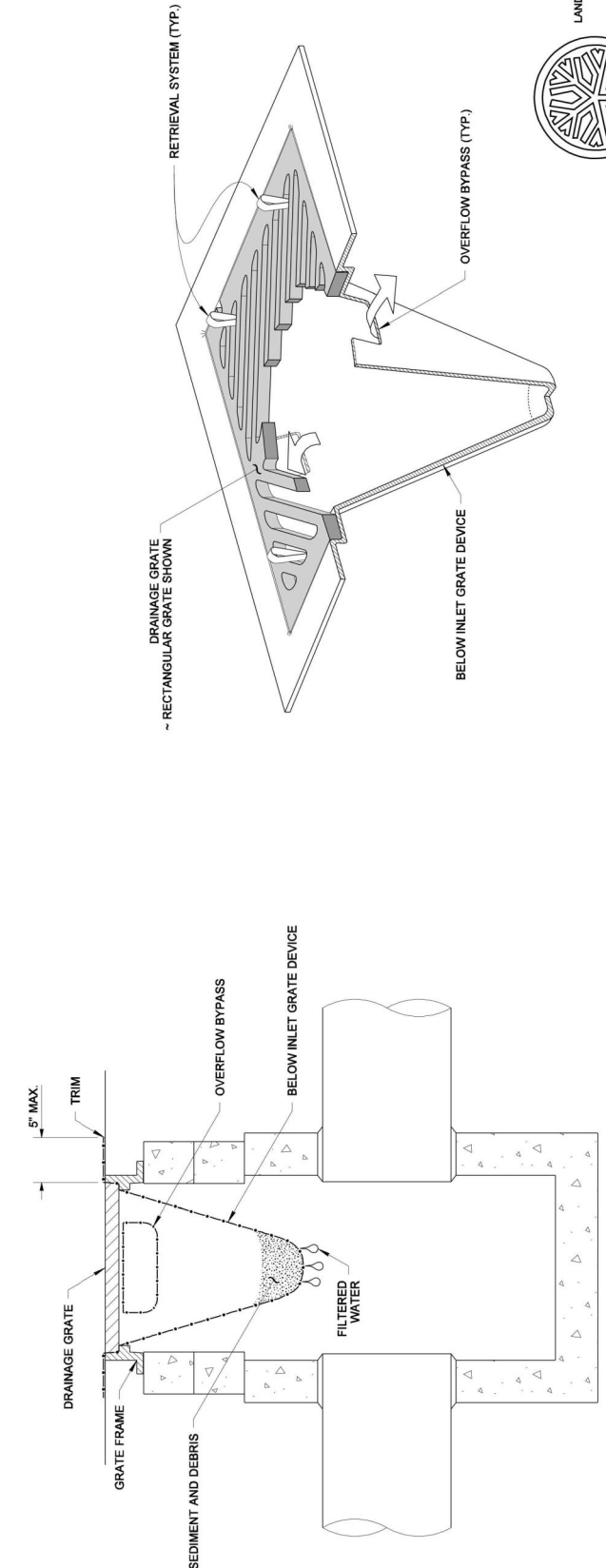
APPROVED FOR PUBLICATION

Mark, Steve
Jun 12 2019 11:11 AM

STATE DESIGN ENGINEER
Washington State Department of Transportation

- NOTES**
1. Wattles shall be in accordance with **Standard Specification, Section 9-14.5(5)**. Install Wattles along contours. Installation shall be in accordance with **Standard Specification, Section 8-01.3(10)**.
 2. Securely knot each end of Wattle. Overlap adjacent Wattle ends 12" (in) behind one another and securely tie together.
 3. Compact excavated soil and trenches to prevent undercutting. Additional staking may be necessary to prevent undercutting.
 4. Install Wattle perpendicular to flow along contours.
 5. Wattles shall be inspected regularly, and immediately after a rainfall produces runoff, to ensure they remain thoroughly entrenched and in contact with the soil.
 6. Perform maintenance in accordance with **Standard Specification, Section 8-01.3(15)**.
 7. Refer to **Standard Specification, Section 8-01.3(16)** for removal.

- NOTES**
1. Size the Below Inlet Grate Device (BIGD) for the storm water structure it will service.
 2. The BIGD shall have a built-in high-flow relief system (overflow bypass).
 3. The retrieval system must allow removal of the BIGD without spilling the collected material.
 4. Perform maintenance in accordance with **Standard Specification 8-01.3(15)**.



STATE OF WASHINGTON REGISTERED LANDSCAPE ARCHITECT

MARK W. MAURER
CERTIFICATE NO. 000566

NOTE: THIS PLAN IS NOT A LEGAL ENGINEERING DOCUMENT. APPROVED FOR PUBLICATION, IN PART, ON BEHALF OF THE WASHINGTON STATE DEPARTMENT OF TRANSPORTATION. A COPY MAY BE OBTAINED UPON REQUEST.

STORM DRAIN INLET PROTECTION

STANDARD PLAN I-40.20-00

SHEET 1 OF 1 SHEET

APPROVED FOR PUBLICATION

Pasco Bekovich III
DATE: 09-20-07

STATE DESIGN ENGINEER
Washington State Department of Transportation

- TEMPORARY WATER POLLUTION/ EROSION CONTROL NOTES:**
1. CONTRACTOR SHALL SUBMIT A TEMPORARY WATER POLLUTION/EROSION CONTROL PLAN (TESC PLAN) PER THE CONTRACT PROVISIONS. THE TESC PLANS SHALL INCLUDE TURBIDITY TEST, SEE THE SPECIFICATIONS.
 2. THE CONTRACTOR SHALL REPORT ALL SPILLS OR DISCHARGE OF POLLUTANTS WITHIN 24 HOURS TO THE CONTRACTING AGENCY.
 3. ALL LIMITS OF CLEARING AND AREAS OF VEGETATION PRESERVATION SHALL BE OBSERVED DURING CONSTRUCTION.
 4. ALL REQUIRED SEDIMENTATION/EROSION CONTROL FACILITIES SHALL BE IN OPERATION PRIOR TO LAND CLEARING AND/OR OTHER CONSTRUCTION ACTIVITIES TO ENSURE THAT SEDIMENT LADEN WATER DOES NOT ENTER THE EXISTING DRAINAGE SYSTEM. ALL EROSION AND SEDIMENT FACILITIES SHALL BE MAINTAINED IN A SATISFACTORY CONDITION UNTIL SUCH TIME THAT CLEARING AND/OR CONSTRUCTION IS COMPLETED AND THE POTENTIAL FOR ON-SITE EROSION HAS PASSED. THE IMPLEMENTATION, MAINTENANCE, REPLACEMENT AND ADDITIONS TO EROSION/SEDIMENTATION CONTROL SYSTEMS SHALL BE THE RESPONSIBILITY OF THE CONTRACTOR.
 5. THE EROSION AND SEDIMENTATION CONTROL SYSTEMS DEPICTED ON THIS DRAWING ARE INTENDED TO BE MINIMUM REQUIREMENTS TO MEET ANTICIPATED SITE CONDITIONS. AS CONSTRUCTION PROGRESSES AND AS UNEXPECTED OR SEASONAL CONDITIONS DICTATE, THE CONTRACTOR SHOULD ANTICIPATE THAT MORE EROSION AND SEDIMENTATION CONTROL FACILITIES WILL BE NECESSARY TO ENSURE COMPLETE SILTATION CONTROL ON THE PROPOSED SITE. DURING THE COURSE OF CONSTRUCTION, IT SHALL BE THE OBLIGATION AND RESPONSIBILITY OF THE CONTRACTOR TO ADDRESS ANY NEW CONDITIONS THAT MAY BE CREATED BY HIS ACTIVITIES AND TO PROVIDE ADDITIONAL FACILITIES, OVER AND ABOVE THE MINIMUM REQUIREMENTS, AS MAY BE NEEDED TO PROTECT ADJACENT PROPERTIES AND THE WATER QUALITY OF THE RECEIVING DRAINAGE SYSTEM.
 6. AT NO TIME SHALL MORE THAN SIX INCHES OF SEDIMENT BE ALLOWED TO ACCUMULATE WITHIN A CATCH BASIN. THE CONTRACTOR SHALL BE RESPONSIBLE FOR REMOVING AND DISPOSING OF THE SEDIMENT. ALL STORM DRAINAGE STRUCTURES WITHIN THE PROJECT LIMITS SHALL BE CLEANED AFTER COMPLETION OF THE PROJECT.
 7. THE CONTRACTOR SHALL REMOVE AND WASTEHAUL MATERIAL DROPPED, WASHED OR TRACKED FROM VEHICLES ONTO THE RIGHT-OF-WAY OR INTO THE EXISTING STORM DRAINAGE SYSTEM. DEBRIS SHALL NOT BE WASHED INTO THE STORM DRAINAGE SYSTEM.
 8. TEMPORARY EROSION CONTROL FACILITIES SHALL BE INSPECTED WEEKLY AND MAINTAINED WITHIN 24 HOURS FOLLOWING A STORM EVENT. SEDIMENT SHALL BE REMOVED TO INSURE THE FACILITIES WILL FUNCTION PROPERLY. THE FACILITIES SHALL BE SATISFACTORILY MAINTAINED UNTIL CONSTRUCTION IS COMPLETED AND THE POTENTIAL FOR ON-SITE EROSION HAS PASSED.
 9. ALL STORM DRAIN INLETS MADE OPERABLE DURING CONSTRUCTION SHALL BE PROTECTED SO THAT STORM WATER RUNOFF SHALL NOT ENTER THE CONVEYANCE SYSTEM WITHOUT FIRST BEING FILTERED OR OTHERWISE TREATED TO REMOVE SEDIMENT.
 10. NO DISTURBED SOIL SHALL REMAIN UNSTABILIZED FOR MORE THAN TWO CALENDAR DAYS.
 11. INSTALL STORM DRAIN INLET PROTECTION IN THE NEW DRAINAGE STRUCTURES AS THEY ARE CONSTRUCTED.

APPROVAL FOR CONSTRUCTION

BY: Heard Schneider
TOWN OF YARROW POINT

DATE: MARCH 2025

APPROVAL EXPIRES: MARCH 2026

Gray & Osborne, Inc.
CONSULTING ENGINEERS

3710 168TH STREET NORTHEAST,
BUILDING B, SUITE 210
ARLINGTON, WA 98223
(360) 454-5490

TOWN OF
YARROW POINT

CHRISTOPHER JOHN BACON
STATE OF WASHINGTON
REGISTERED PROFESSIONAL ENGINEER
56827
3/14/2025

KEVIN W. BROWN
STATE OF WASHINGTON
REGISTERED PROFESSIONAL ENGINEER
38319
3/14/2025

TOWN OF
YARROW POINT

**SALLY'S ALLEY
PHASE 2**

No.	DATE	REVISION

ISSUED FOR: BID PLAN SET

ISSUE DATE: MAR 2025

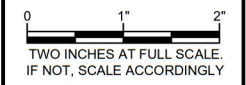
APPROVED BY: KWB

CHECKED BY: CJB

DRAWN BY: MAN

G & O JOB NO.: 23445.02

FILE: STORM-DET.DWG



CIVIL

TEMPORARY EROSION CONTROL DETAILS

DRAWING: **4** OF: **7**

M:\yarrow_point\23445.00 town wide storm and ugc\03 construction\plan revisions\23445.02 sallys alley phase 2\civil\storm P&P.dwg, 3/14/2025 10:05 AM, CHRIS BIACON

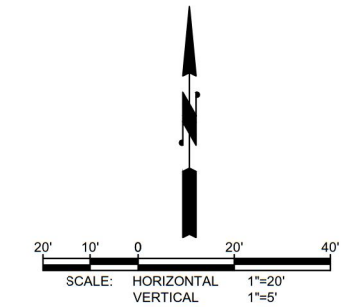
No.	DATE	REVISION
ISSUED FOR: BID PLAN SET		
ISSUE DATE: MAR 2025		
APPROVED BY: KWB		
CHECKED BY: CJB		
DRAWN BY: MAN		
G & O JOB NO.: 23445.02		
FILE: STORM P&P.DWG		

0 1" 2"
 TWO INCHES AT FULL SCALE.
 IF NOT, SCALE ACCORDINGLY

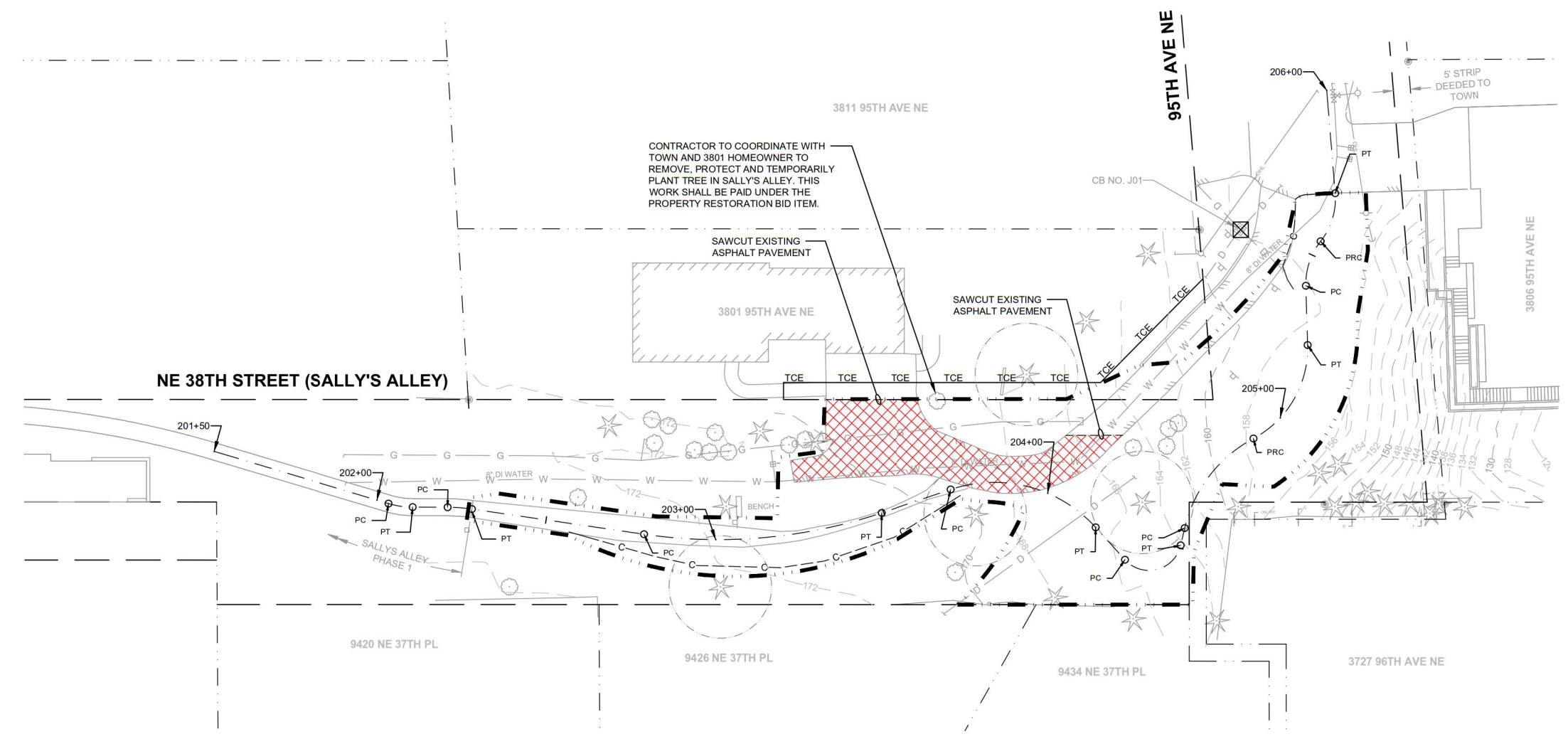
CIVIL

TESC AND DEMO PLAN

DRAWING: **5** OF: **7**



- ASPHALT TO BE REMOVED AND WASTEHAULED.
- STORM DRAIN INLET PROTECTION PER TEMPORARY WATER POLLUTION/EROSION CONTROL NOTES, SEE SHEET 4
- APPROX. TREE PROTECTION AREA (±15' RADIUS AROUND TREE). CONTRACTOR SHALL NOTIFY THE CONTRACTING AGENCY PRIOR TO CUTTING ANY ROOTS 2" DIAMETER OR GREATER.
- APPROX. CLEARING LIMITS

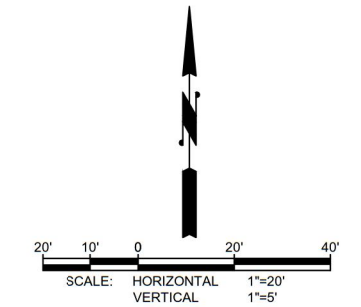
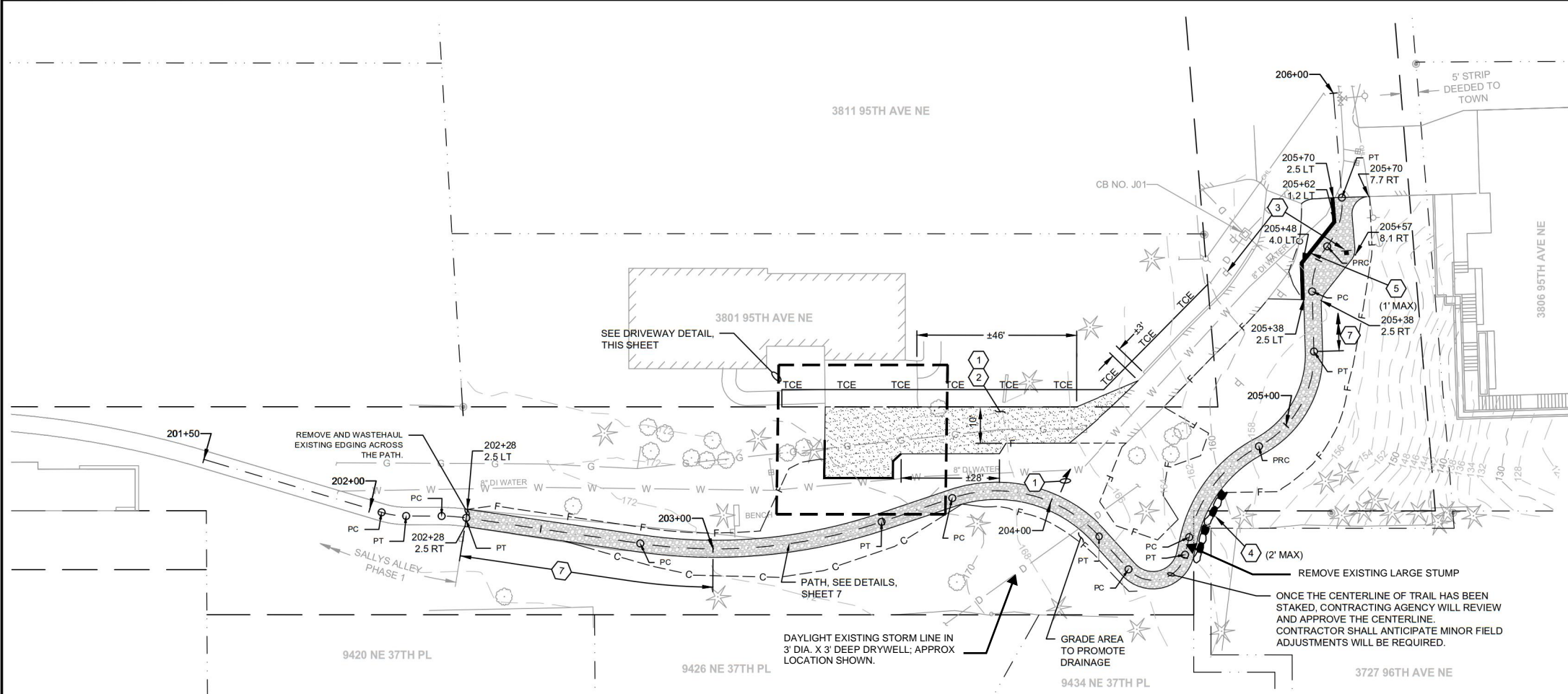


**BURIED UTILITIES IN AREA
 CALL BEFORE YOU DIG
 1-800-424-5555**
 EXISTING UTILITIES SHOWN ARE FROM THE
 BEST AVAILABLE INFORMATION AND NO
 GUARANTEE IS MADE AS TO THE EXACT SIZE,
 TYPE, LOCATION OR DEPTH

RIGHT-OF-WAY DISCLAIMER
 THE RIGHT-OF-WAY AND/OR
 PROPERTY LINES SHOWN HEREON
 ARE BASED ON AVAILABLE
 INFORMATION, NOT ON A SURVEYED
 LOCATION AND ARE ONLY
 APPROXIMATE

APPROVAL FOR CONSTRUCTION
 BY: Heard Schneider
 TOWN OF YARROW POINT
 DATE: MARCH 2025
 APPROVAL EXPIRES: MARCH 2026

M:\yarrow_point\23445.00 town wide storm and ugc\03 construction\plan revisions\23445.02 sallys alley phase 2\Civil\STORM P&P.dwg, 3/14/2025 10:05 AM, CHRIS BIACON

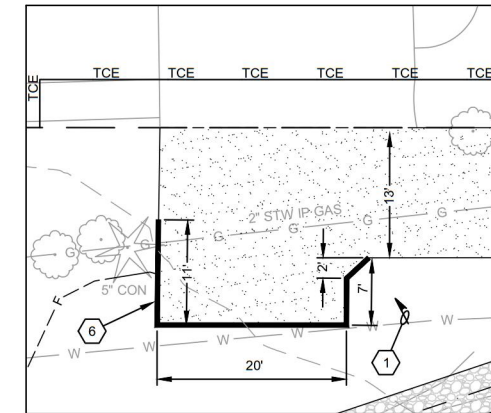
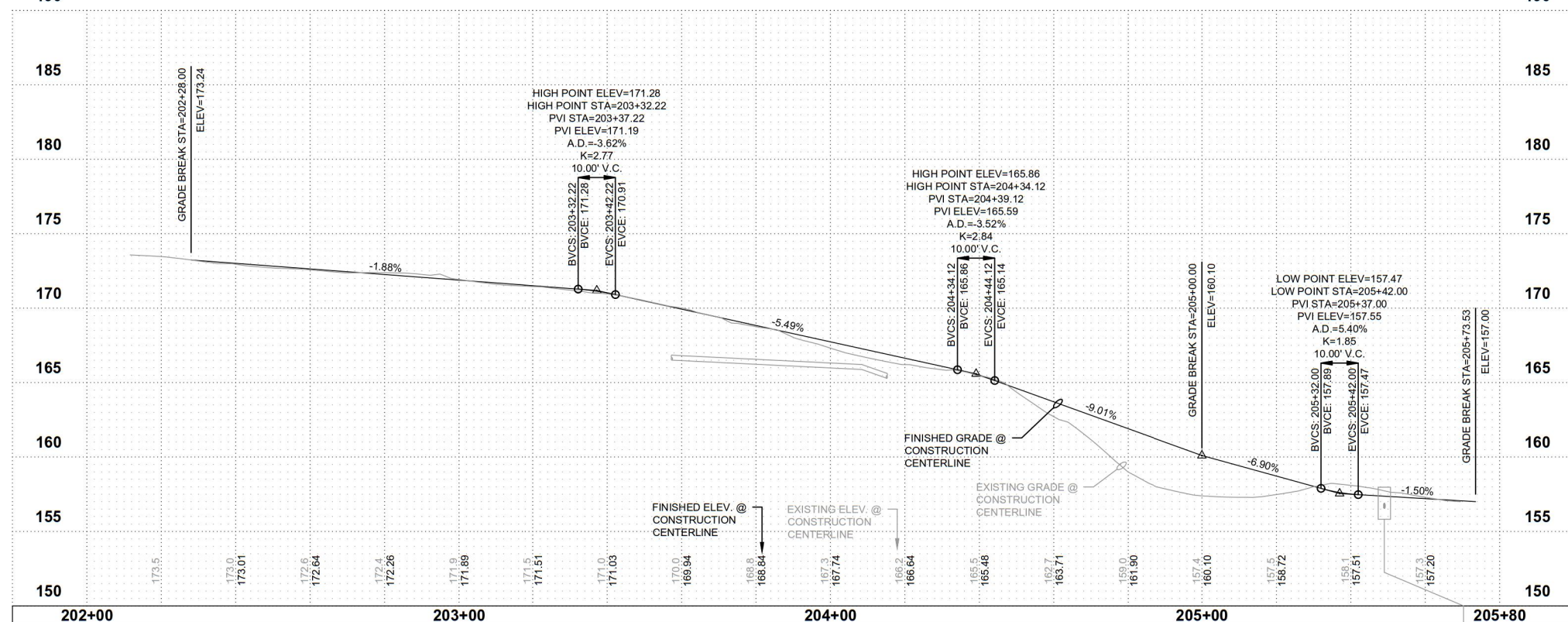


GENERAL NOTES

- RESTORE ALL DISTURBED SURFACES WITH SEEDING, FERTILIZING AND MULCHING OVER 4" SUITABLE NATIVE MATERIAL OR TOPSOIL.
- CONTRACTOR SHALL MAINTAIN PEDESTRIAN ACCESS 3801 95TH AVE NE AND CONSTRUCTION VEHICLE ACCESS TO 3806 95TH AVENUE NE AT ALL TIMES.
- PROTECT ALL TREES EXCEPT AS NOTED. CONTRACTOR SHALL NOTIFY CONTRACTING AGENCY PRIOR TO CUTTING ROOTS GREATER THAN 2" IN DIAMETER.

CONSTRUCTION NOTES

- MAINTAIN CONSTANT GRADE.
- CLEAR AND GURB TO A DEPTH OF 6". COMPACT SUBGRADE AND INSTALL 2" OF CSTC OVER 4" CSBC (COMPACTED DEPTHS).
- RELOCATE EXIST. SIGN. FURNISH AND INSTALL NEW POST, FOUNDATION AND HARDWARE IN-KIND. WASTEHAUL EXISTING POST AND FOUNDATION.
- INSTALL ROCKERY PER DETAIL, SHEET 7. (APPROX. HEIGHT NOTED)
- INSTALL STACKED TIMBERS PER DETAIL, SHEET 7. (APPROX. HEIGHT NOTED)
- INSTALL SINGLE TIMBER EDGING PER DETAIL, SHEET 7.
- TYPICAL PATH W/ STRIP LANDSCAPING EDGING.



DRIVEWAY DETAIL
SCALE 1" = 10'

BURIED UTILITIES IN AREA CALL BEFORE YOU DIG
1-800-424-5555
EXISTING UTILITIES SHOWN ARE FROM THE BEST AVAILABLE INFORMATION AND NO GUARANTEE IS MADE AS TO THE EXACT SIZE, TYPE, LOCATION OR DEPTH

RIGHT-OF-WAY DISCLAIMER
THE RIGHT-OF-WAY AND/OR PROPERTY LINES SHOWN HEREON ARE BASED ON AVAILABLE INFORMATION, NOT ON A SURVEYED LOCATION AND ARE ONLY APPROXIMATE

APPROVAL FOR CONSTRUCTION
BY: *Heard Schneider*
TOWN OF YARROW POINT
DATE: MARCH 2025
APPROVAL EXPIRES: MARCH 2026

Gray & Osborne, Inc.
CONSULTING ENGINEERS
3710 168TH STREET NORTHEAST,
BUILDING B, SUITE 210
ARLINGTON, WA 98223
(360) 454-5490

TOWN OF
YARROW POINT

CHRISTOPHER JOHN BIACON
STATE OF WASHINGTON
REGISTERED PROFESSIONAL ENGINEER
56827
3/14/2025

KEVIN W. BROWN
STATE OF WASHINGTON
REGISTERED PROFESSIONAL ENGINEER
39319
3/14/2025

TOWN OF
YARROW POINT

SALLY'S ALLEY PHASE 2

No.	DATE	REVISION
ISSUED FOR: BID PLAN SET		
ISSUE DATE: MAR 2025		
APPROVED BY: KWB		
CHECKED BY: CJB		
DRAWN BY: MAN		
G & O JOB NO.: 23445.02		
FILE: STORM P&P.DWG		

0 1" 2"
TWO INCHES AT FULL SCALE.
IF NOT, SCALE ACCORDINGLY

CIVIL

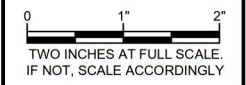
TRAIL PLAN & PROFILE

DRAWING: **6** OF: **7**

EX AREA DRAIN, CB NO. J01
STA. 205+49.0, 22.3 LT
RIM=157.97
IE=156.55 4" CPEP SW
IE=156.55 4" CPEP SE
IE=156.55 4" CONC NE
IE=156.55 4" PVC NW

No.	DATE	REVISION

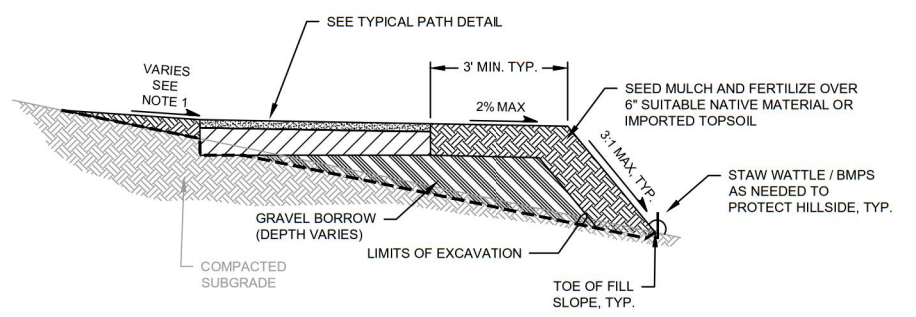
ISSUED FOR: BID PLAN SET
 ISSUE DATE: MAR 2025
 APPROVED BY: KWB
 CHECKED BY: CJB
 DRAWN BY: MAN
 G & O JOB NO.: 23445.02
 FILE: CON-DET.DWG



CIVIL

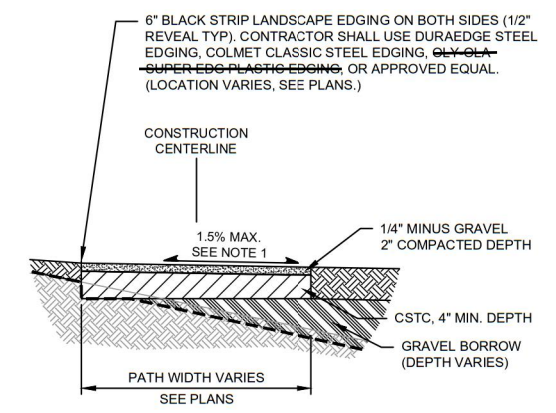
**CONSTRUCTION
DETAILS**

DRAWING: **7** OF: **7**



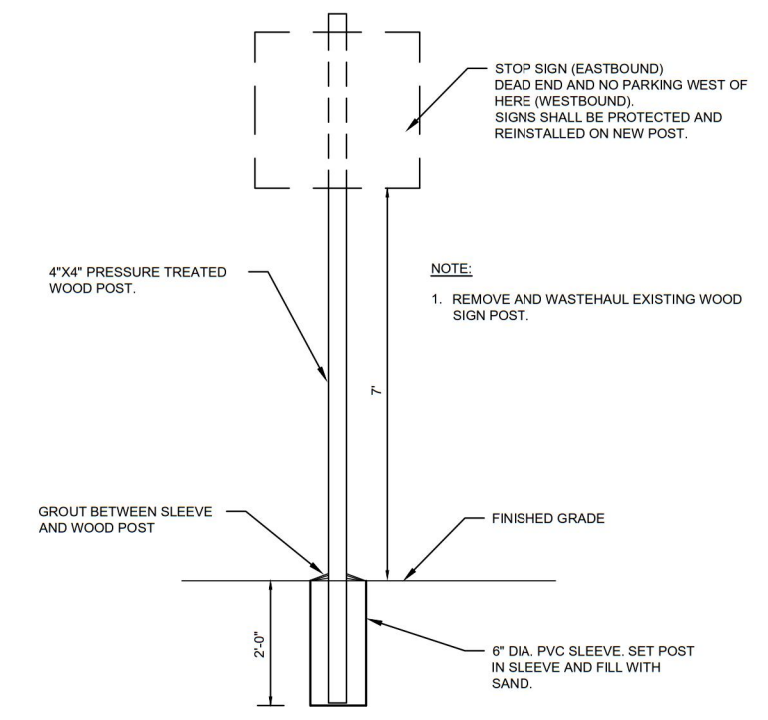
- NOTES:**
1. TRANSITION SLOPE TO MAINTAIN POSITIVE DRAINAGE OFF THE PATH.

TYPICAL PATH SECTION
NOT TO SCALE



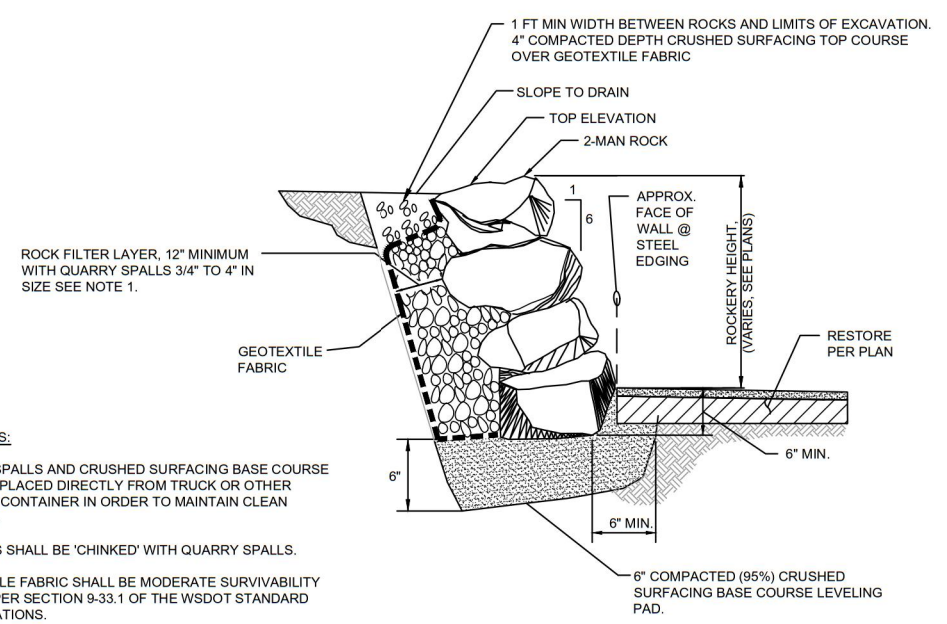
- NOTES:**
1. TRANSITION SLOPE TO MAINTAIN POSITIVE DRAINAGE.
 2. ALL DEPTHS ARE COMPACTED DEPTHS.

TYPICAL PATH DETAIL
NOT TO SCALE



- NOTE:**
1. REMOVE AND WASTEHAUL EXISTING WOOD SIGN POST.

SIGN INSTALLATION DETAIL
NOT TO SCALE

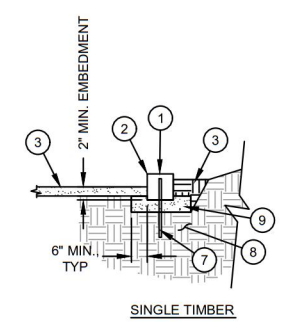
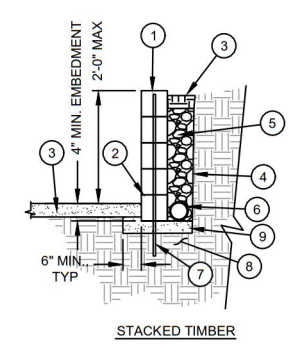


- GENERAL NOTES:**
1. QUARRY SPALLS AND CRUSHED SURFACING BASE COURSE SHALL BE PLACED DIRECTLY FROM TRUCK OR OTHER SUITABLE CONTAINER IN ORDER TO MAINTAIN CLEAN BACKFILL.
 2. OPENINGS SHALL BE 'CHINKED' WITH QUARRY SPALLS.
 3. GEOTEXTILE FABRIC SHALL BE MODERATE SURVIVABILITY CLASS A PER SECTION 9-33.1 OF THE WSDOT STANDARD SPECIFICATIONS.
 4. CONTRACTOR SHALL UTILIZE EXISTING ROCKS ON SITE. SEE IMAGE BELOW.

ROCK WALL DETAIL
NOT TO SCALE

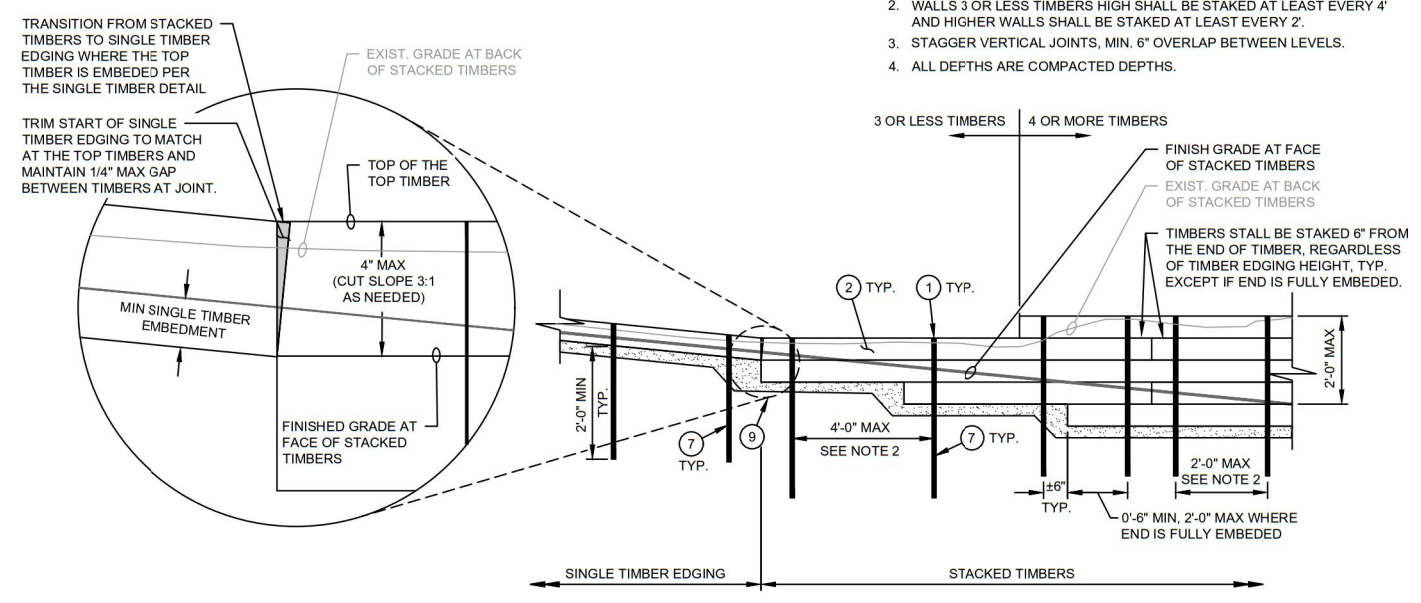


EXISTING ROCKS IN SALLY'S ALLEY
PICTURE TAKEN FROM DRIVEWAY AT APPROX. STA. 205+00
LOOKING SOUTHEAST



1. COUNTERSINK REBAR AND FILL HOLE WITH ACRYLIC CAULK, 1/2" DEEP
2. LANDSCAPE TIMBER (5 1/2" x 5 1/2")
3. RESTORE AS NOTED IN PLANS.
4. FILTER GEOTEXTILE FABRIC SHALL BE MODERATE SURVIVABILITY CLASS A PER SECTION 9-33.1 OF THE WSDOT STANDARD SPECIFICATIONS.FABRIC
5. GRAVEL BACKFILL FOR DRAINS
6. PERFORATED 4" DRAIN PIPE, DAYLIGHT AT END OF TIMBER EDGING
7. #5 REBAR, 2'-0" MIN EMBEDMENT.
8. COMPACTED SUBGRADE
9. 4" CSTC LEVELING PAD

- NOTES:**
1. HEIGHT SHALL BE 4" (SINGLE TIMBER) EXCEPT AS NOTED ON THE PLAN. HEIGHT OF TIMBER EDGE WILL VARY BASED ON FIELD CONDITIONS, MAINTAIN 2" MIN. ABOVE FINISH GRADE AT BACK OF TIMBER EDGING.
 2. WALLS 3 OR LESS TIMBERS HIGH SHALL BE STAKED AT LEAST EVERY 4' AND HIGHER WALLS SHALL BE STAKED AT LEAST EVERY 2'.
 3. STAGGER VERTICAL JOINTS, MIN. 6" OVERLAP BETWEEN LEVELS.
 4. ALL DEPTHS ARE COMPACTED DEPTHS.



TIMBER EDGING
NOT TO SCALE

APPROVAL FOR CONSTRUCTION
 BY: *Heard Schneider*
 TOWN OF YARROW POINT
 DATE: MARCH 2025
 APPROVAL EXPIRES: MARCH 2026

m:\yarrow point\23445.00 town wide storm and ugc\03 construction\plan revisions\23445.02 sallys alley phase 2\CIVIL\CON-DET.dwg, 3/12/2025 2:38 PM, CHRIS BACON